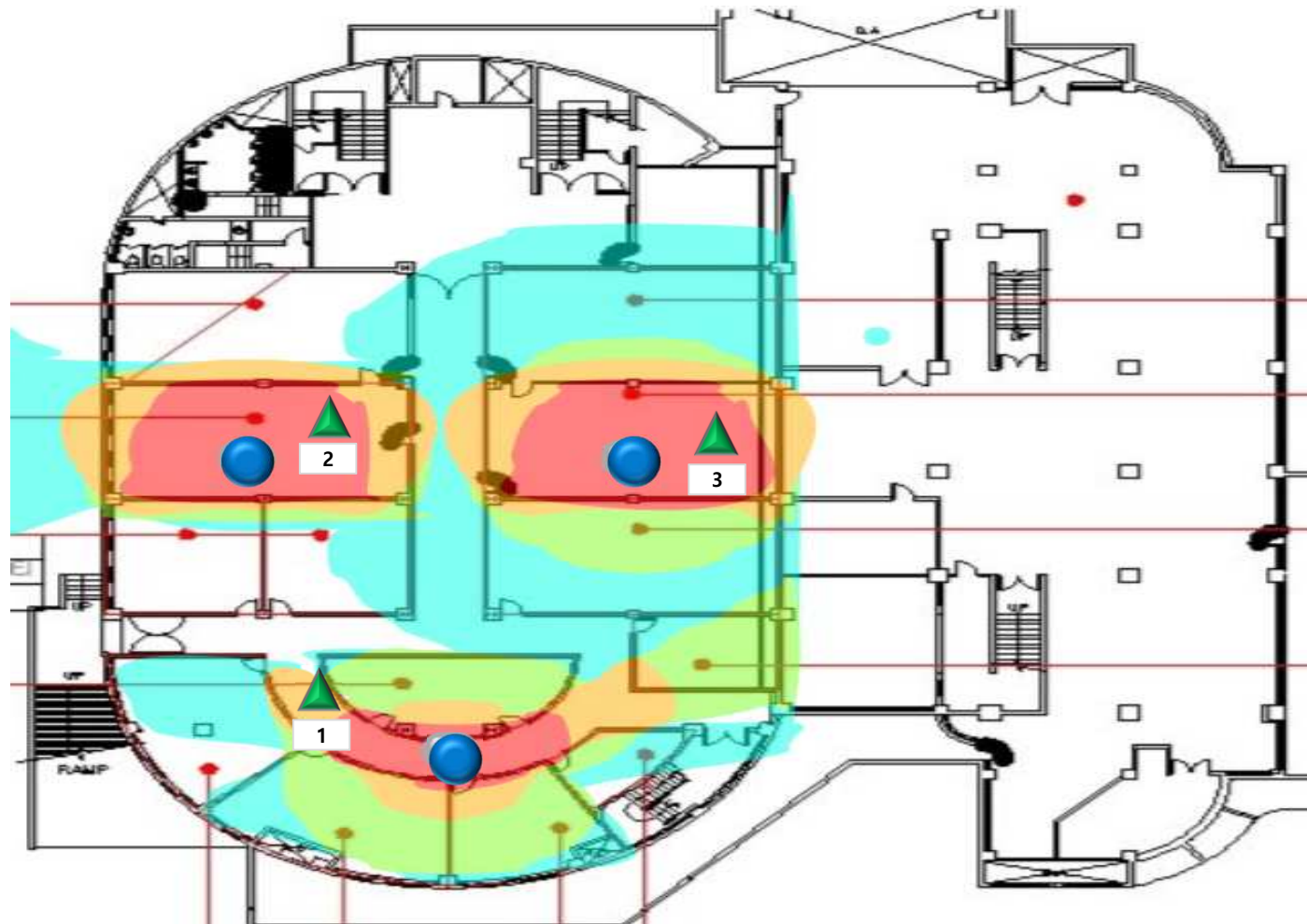


# 백석홀 지하1층

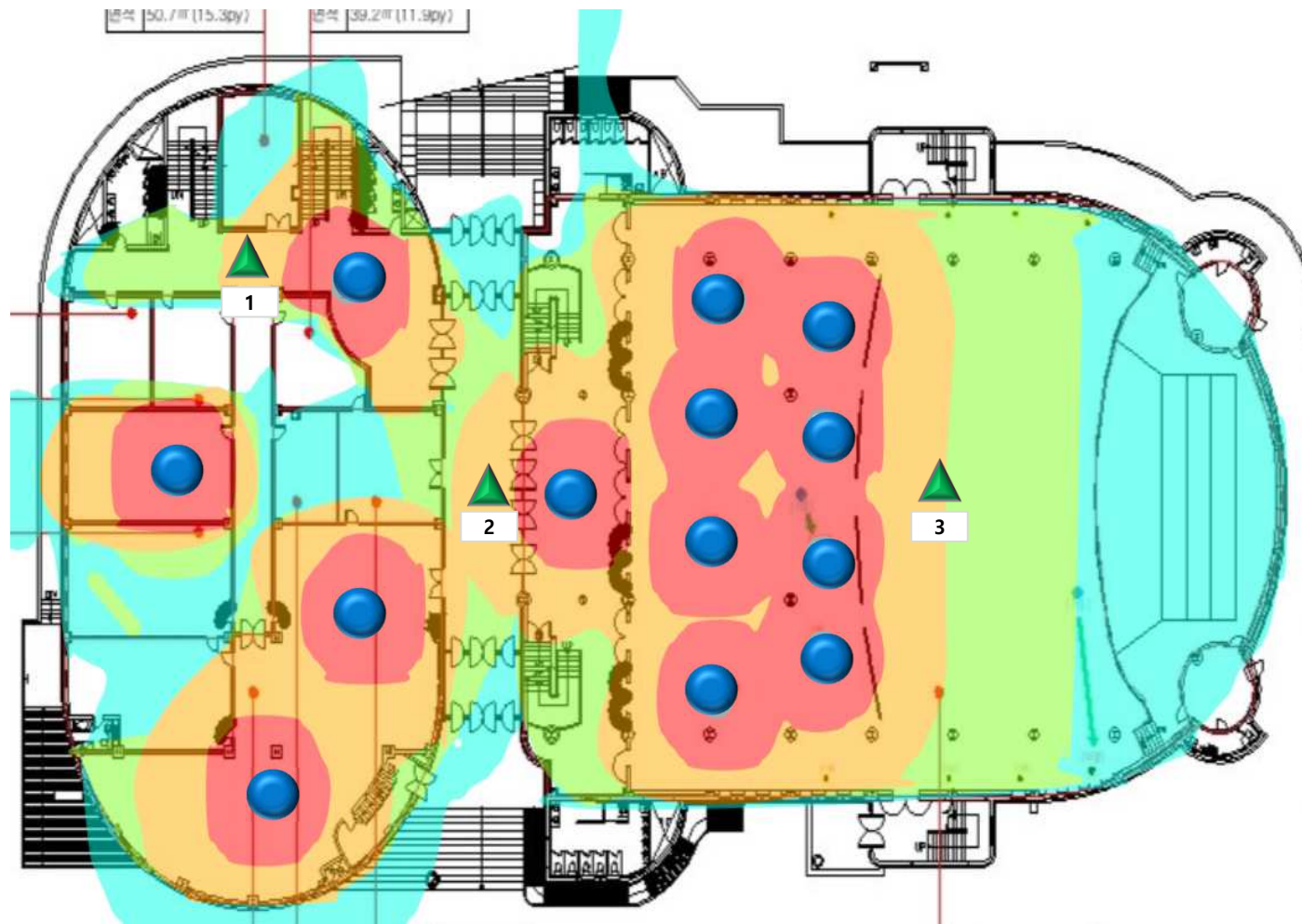


측정 위치	신호세기	Through Put Up/Down	
		Up	Down
1	- 50 dbm	85 M	153 M
2	-41 dbm	108 M	144 M
3	-43 dbm	66 M	133 M

# 백석홀 1층

AP
  측정위치

-45dbm  
매우 좋음
  -55dbm  
좋음
  -65dbm  
보통
  -75dbm  
약함

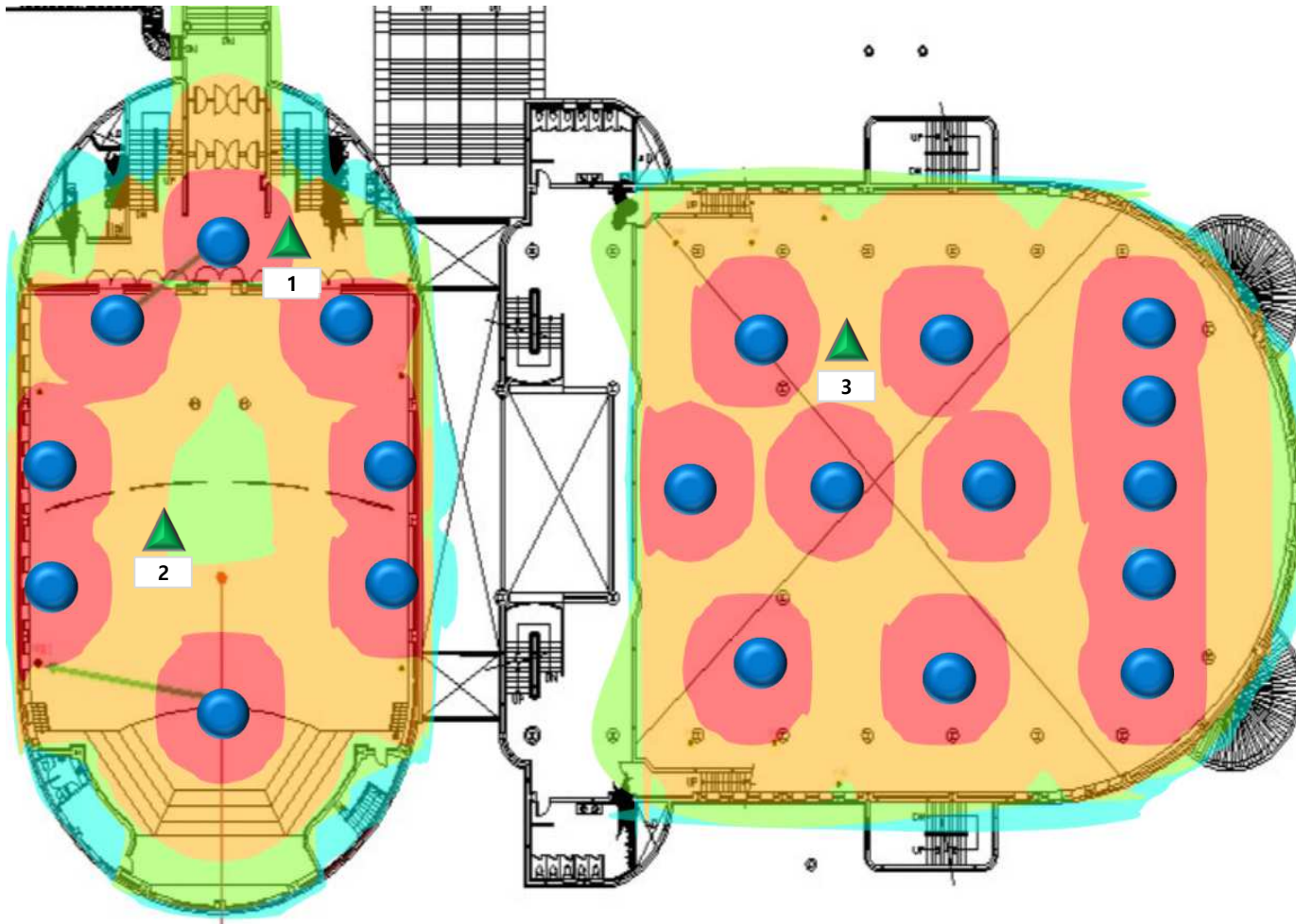


측정 위치	신호세기	Through Put Up/Down	
		1	-39 dbm
2	-42 dbm	378 M	450 M
3	-49 dbm	342 M	389 M

# 백석홀 2층

AP
  측정위치

-45dbm  
매우 좋음
  -55dbm  
좋음
  -65dbm  
보통
  -75dbm  
약함



측정 위치	신호세기	Through Put Up/Down	
		Up	Down
1	-45 dbm	348 M	429 M
2	-47 dbm	367 M	393 M
3	-43 dbm	372 M	414 M